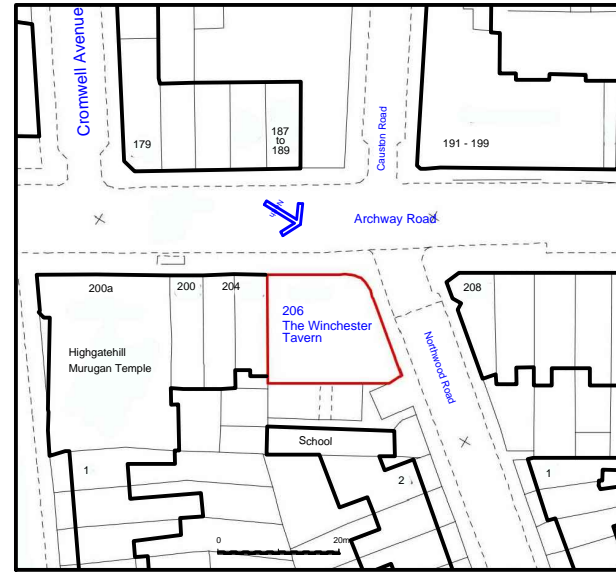


Bin Store



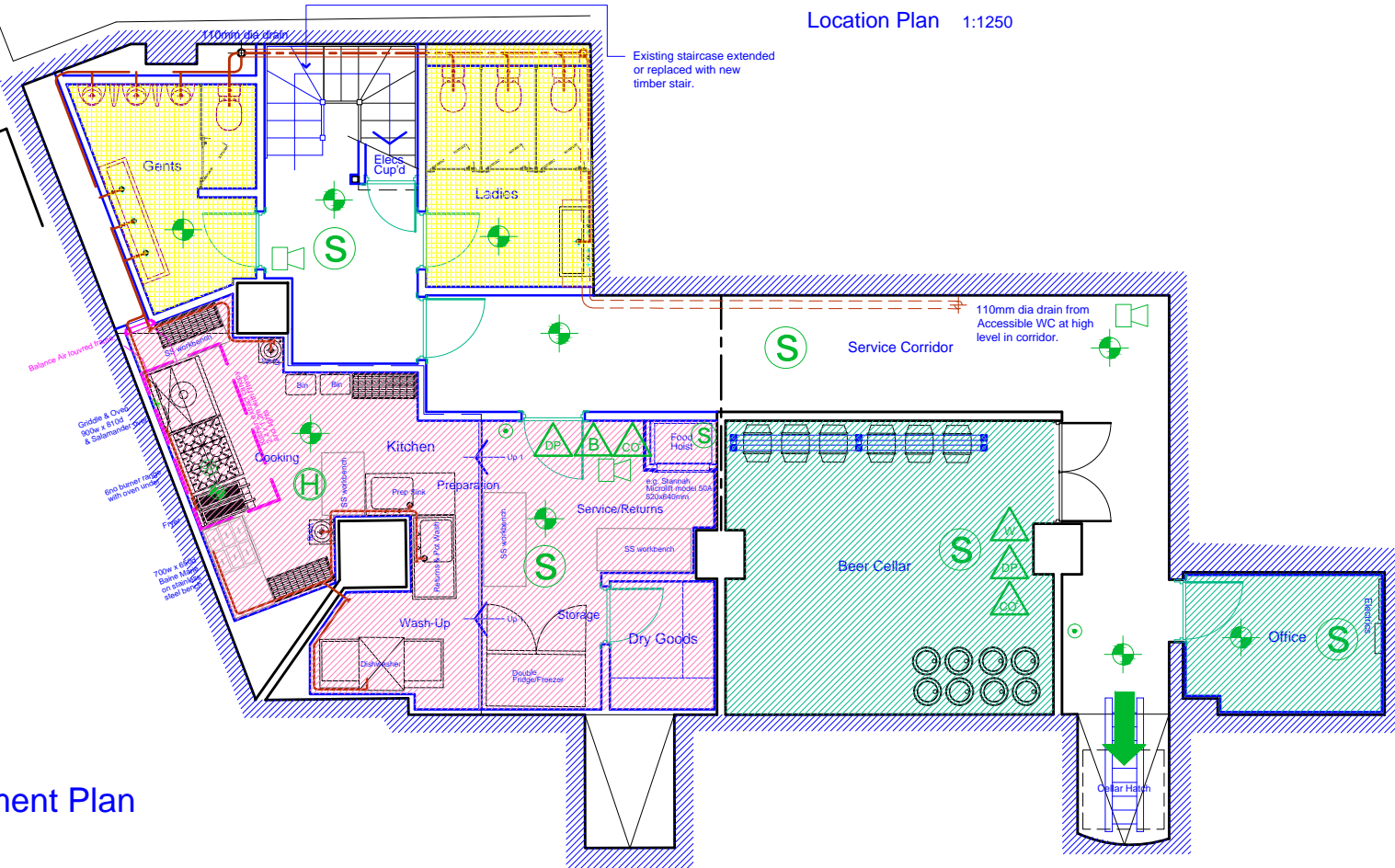
Location Plan 1:1250

### LICENSING KEY

- Enclosing Structure ( walls )
- Int & Ext Licensed Areas
- Kitchen Area
- Toilet Areas
- Alcohol Storage
- Access / Egress Points

### Fire Extinguishers and Emergency Lighting, Signs Smoke Detectors etc.

- Emergency Light position
- EXIT illuminated sign
- FIRE EXIT illuminated sign
- Smoke / Heat Detector position
- Fire Alarm Siren
- Fire Alarm Call Point (Break Glass)
- Water/CO<sup>2</sup> wall mounted Fire Extinguisher
- Dry Powder wall mounted Fire Extinguisher
- CO<sup>2</sup> wall mounted Fire Extinguisher
- Fire Blanket - Wall Mounted.



Basement Plan

REV	DATE	NOTES & REVISIONS	INITIAL
-	08.10.21	1st Issue	jml

DO NOT SCALE OFF THIS DRAWING  
 DIMENSIONS TO BE CHECKED ON SITE WHERE POSSIBLE  
 ©THIS DRAWING MUST NOT BE REPRODUCED IN WHOLE OR PART WITHOUT WRITTEN AUTHORITY

PROJECT CLIENT  
**The Winchester Tavern**  
 206 Archway Road  
 Highgate  
 N6 5BA

**Leeds Brewery Co Ltd**

CONTENT  
**Licensing Plan**  
**Basement Level**

DRAWN	jml	SCALE	1:100 @ A4
CHECKED		DATE	Oct 2021
JOB NO	1729	DRG NO	11



BULLDOG DESIGN LIMITED  
 23 BROOKFIELD ROAD, HEADINGLEY, LEEDS LS6 4EJ.  
 TEL. 07946 350646  
 E-MAIL jon@bulldogdesign.co.uk